


1

## Setting the Stage

- CERTs are able to:
  - Assist emergency services personnel when requested in accordance with standard operating procedures (SOPs) developed by the sponsoring agency and by area of training.
  - Assume some of the same functions as emergency services personnel following a disaster.
  - Prepare families and communities prior to emergencies and assist neighbors during an emergency when first responders are not immediately available.


 CERT Points of Distribution

2

2

**Community Emergency Response Team**


- Personal safety is ALWAYS the number one priority.
- Work as a team.
- Wear appropriate PPE – your personal protective equipment ...gloves, helmet, goggles, N95 mask, boots, etc.
- The CERT goal is to do the **Greatest Good for the Greatest Number.**
- Hope for the best but plan for the worst.

 CERT Points of Distribution 3

3

**Points of Distribution**

- **To begin, what is a Point of Distribution?**
- A Point of Distribution or POD is where the public goes to pick up emergency supplies following a disaster. The need for a POD is based on lack of infrastructure to support normal distribution of food, water, medicine or other supplies.

 CERT Points of Distribution 4

4

### *Points of Distribution*

- CPODs are Commodity Points of Distribution. Common goods handled are shelf stable meals, water, baby formula, ice, sanitary items and shelter items.
- MCM PODS – are Medical Countermeasures Points of Distribution. Designed originally for anthrax, they are now used for other medical interventions as well.



CERT Points of Distribution

5

5

### *Points of Distribution Locations*

- Open PODs are dispensing locations that serve the public.
- Each jurisdiction within the County has pre-identified location(s) for Open PODs. Many are outdoor sites that allow for drive-through or pedestrian clients.
- Closed POD Partners are PODs located within a business, healthcare facility or residential setting that is open only to employees or group residents and their family members. Closed PODs relieve pressure on Open PODs.




CERT Points of Distribution

6

6

### Points of Distribution Staffing

- County or City staff and volunteers, identified in advance, will be available for the receiving, staging, storing, and distribution operation functions within the POD.
- Staffing levels will depend on the design population of the POD, the duration of the POD, the complexity of the deliverables and the supply of deliverables.
- The POD Manager is responsible for the staffing and training.




CERT Points of Distribution

7

7

### Volunteer Deployment

- Local jurisdictions are responsible for training and organizing large numbers of volunteers to perform the majority of dispensing site functions.
- Cities will be responsible for directing volunteers to go to an Emergency Volunteer Reception Center (VRC) where they will sign in, be screened for skills, get a background check, register as a Disaster Service Worker (DSW), and receive general deployment instructions.




CERT Points of Distribution

8

8

**Mobilization Center**

- Next, when needed, a volunteer is called to report to a Mobilization Center.
- Mobilization Centers fulfill four main functions:
  - Assigning roles to pre-screened volunteers.
  - Providing prophylactic medication to volunteers, if necessary.
  - Training volunteers in their assigned roles.
  - Deploying POD staffing to POD sites as needed.
- Volunteers can accept or reject the mission.

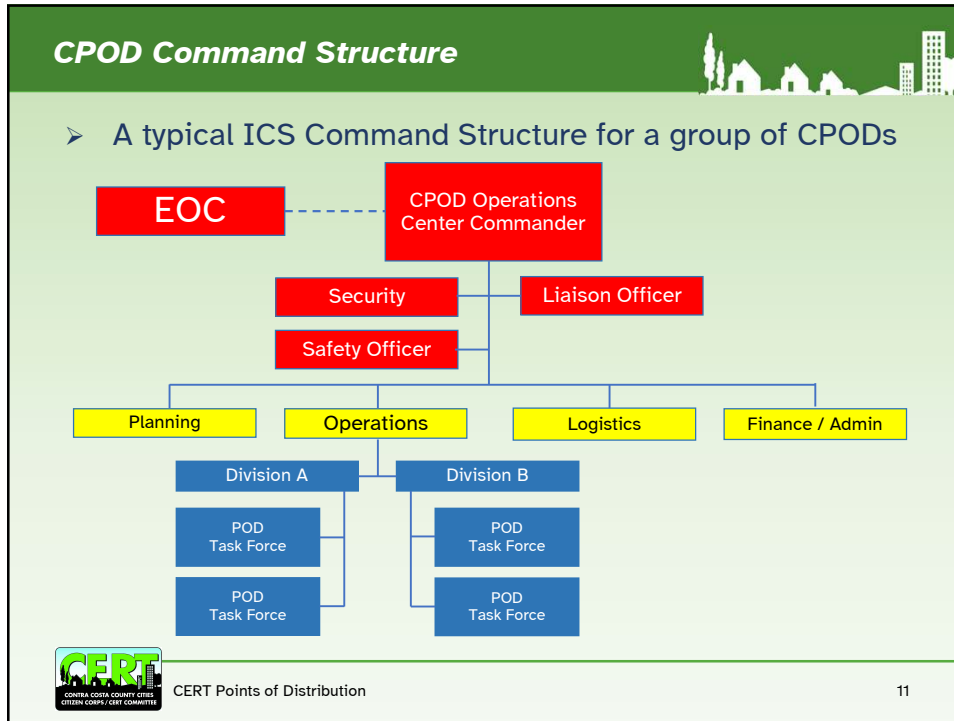
 CERT Points of Distribution 9

9

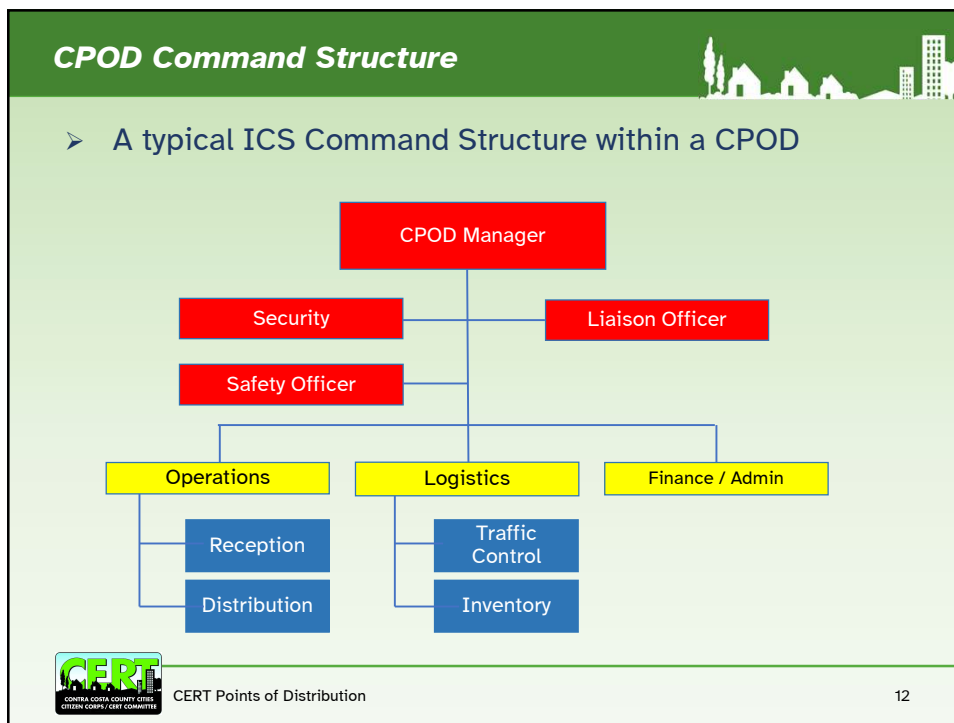
# Commodity PODs

10




11



12

**What is CERT's Role in a CPOD**

- CERTs can perform several functions within a CPOD.
- The CPOD Manager is the one who decides who will do what and when.
- Typical CERT functions at a CPOD might be:
  - Traffic control
  - Reception
  - Distribution
  - Inventory handling
  - Runner
  - Radio communications

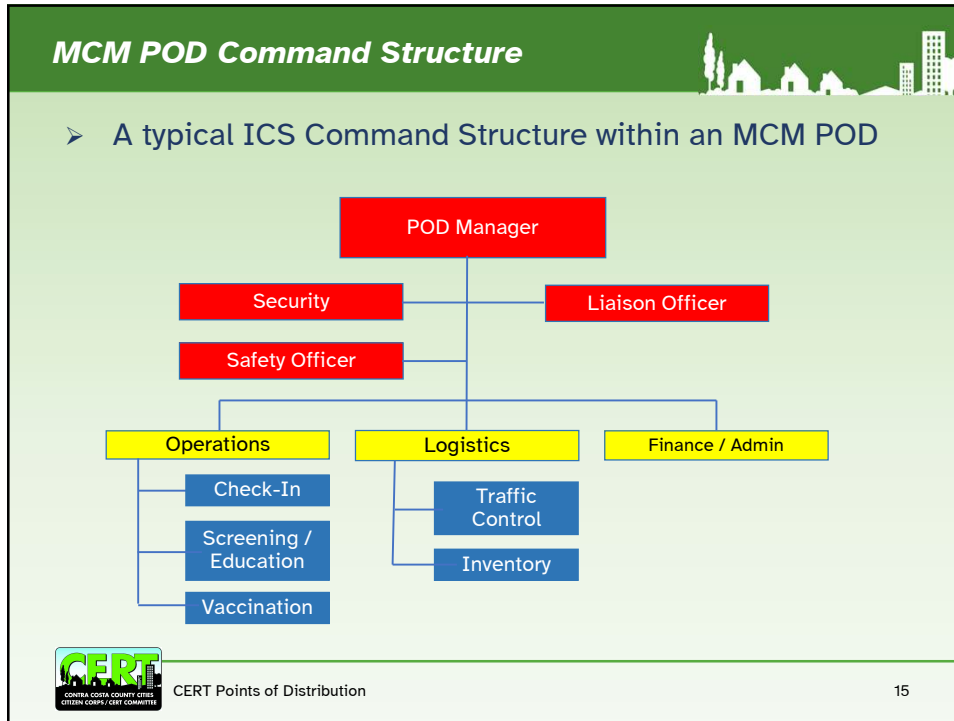
 CERT Points of Distribution 13

13

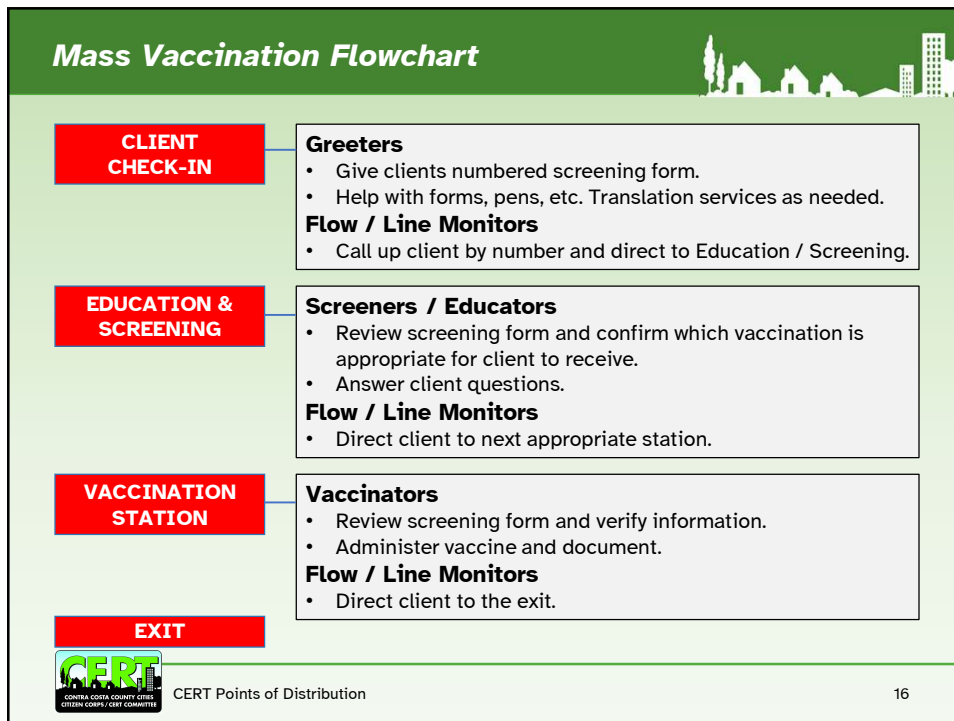
**MCM PODs**

14



15




16



**What is CERT's Role in an MCM POD**


- CERTs can function in several positions within an MCM POD.
- The MCM POD Manager is the one who decides who will do what and when.
- Typical CERT functions at an MCM POD might include:
  - Traffic control
  - Check-In Greeters
  - Flow / Line Monitors
  - Inventory handling
  - Runners
  - Interpreters

 CERT Points of Distribution 17

17

**Further Training in POD Management**

- FEMA offers a 4 hour Independent Studies class, IS-26: Guide to Points of Distribution.
- Additional classes that are coupled with IS-26 are:
  - IS-293: Mission Assignment Overview – 3 hours
  - IS-1001: The Public Assistance Delivery Model Orientation – 4 hours
  - IS-1005: Public Assistance Alternative Procedures – 4 hours
  - IS-1009: Conditions of the Public Assistance Grant – 7 hours

 CERT Points of Distribution 18

18

